



DATA CENTER AND FIBER CAPABILITIES

CREATING THE FUTURE PROOF DATA CENTER ENVIRONMENT

The ideal data center site requires the ability to efficiently manage power and utility needs to maximize production and adapt for future technological and cooling advancements.

Billingsley Company's data center sites address all of these needs with a highly adaptable space that provides the ability to respond quickly and easily to client, organizational, and technological changes.

PRECISION ENVIRONMENT

Your company's need for a scalable and flexible data center relies heavily on choosing the right location. New technologies are adopted and implemented very quickly in the data center market, so facilities must be able to accommodate current systems while being flexible enough to protect the investment and remain reliable and competitive in an unknown future. Selecting the right location is the first and most critical step in the path to success for the future of your company's data.

FLEXIBLE, ADAPTIVE, SCALABLE AND EFFICIENT

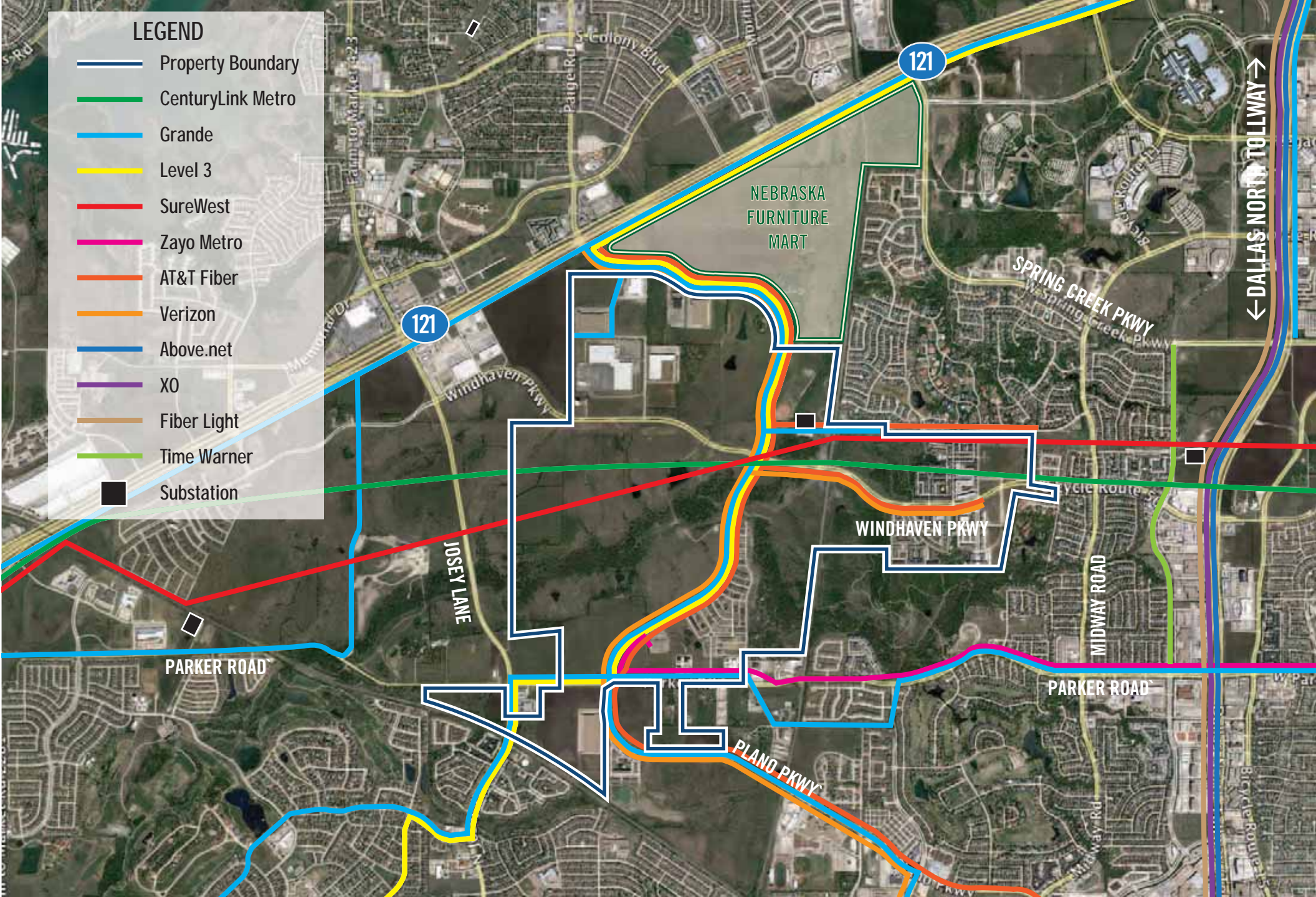
Available data center sites at Austin Ranch feature favorable site characteristics as well as local and state tax incentives. Austin Ranch was designed to accommodate your company's data center needs:

- Dual-feed substation set up
- Up to 10 MW redundant power capacity
- Minimal distances to substations
- Restrictive acoustical and fuel storage requirements
- Adequate area utilities
- Low risk factors

FIBER PROVIDERS

Several fiber providers are present in the area:

- | | | |
|---------------------|---------------|--------------|
| • AT&T Fiber | • XO | • Grande |
| • CenturyLink Metro | • Level 3 | • SureWest |
| • Verizon | • Fiber Light | • Zayo Metro |
| • Above.net | • Time Warner | |



FIBER MAP

FOR INFORMATION: Lucy Burns | Phone: 214.270.0998 | lburns@billingsleyco.com | billingsleyco.com

Developed by

Billingsley